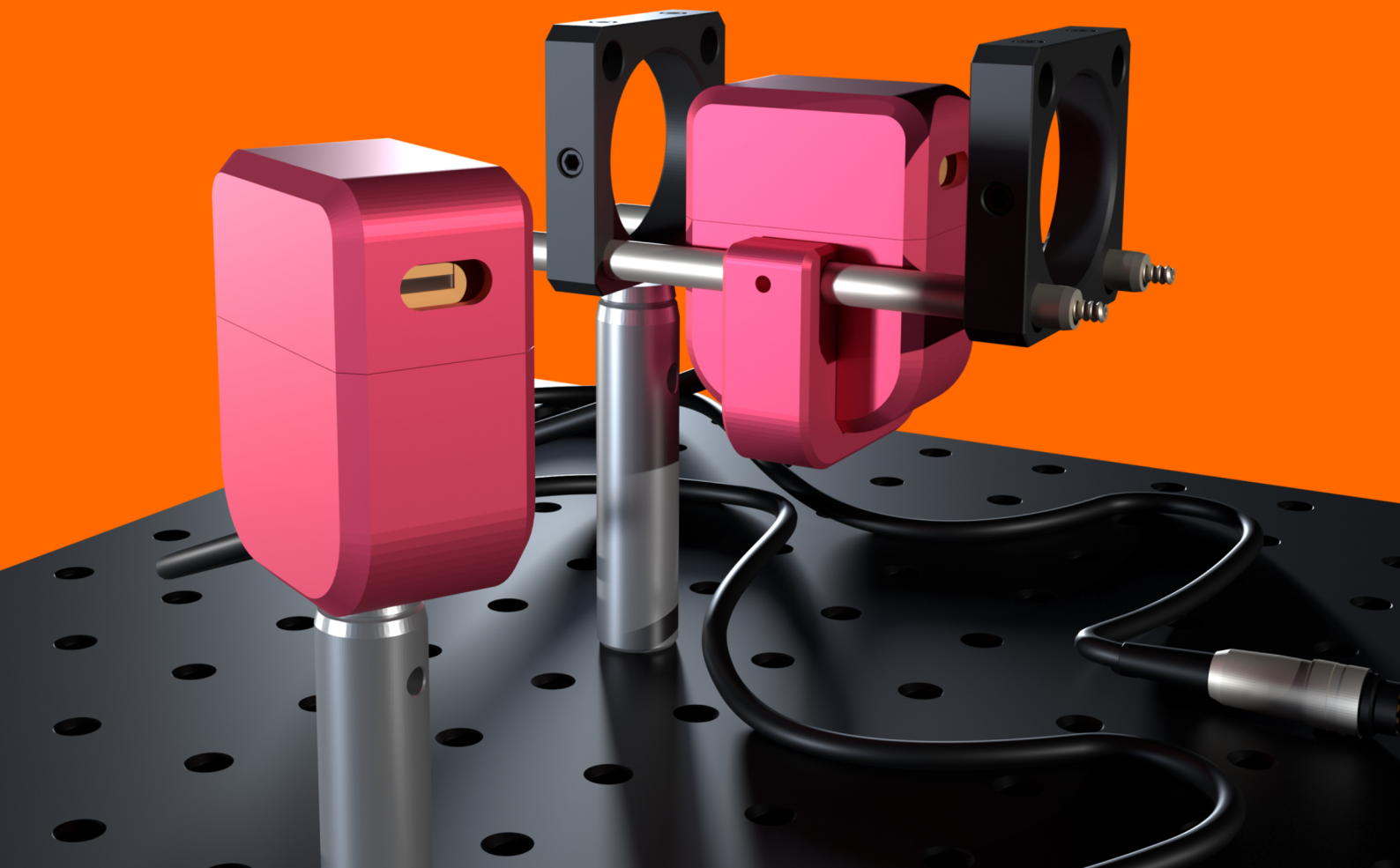
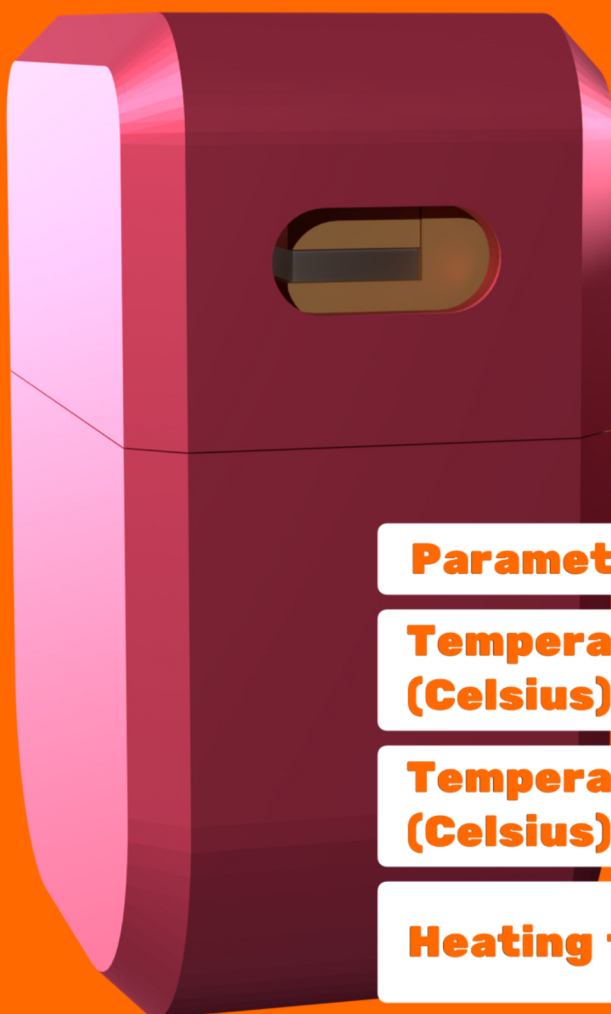


Manual



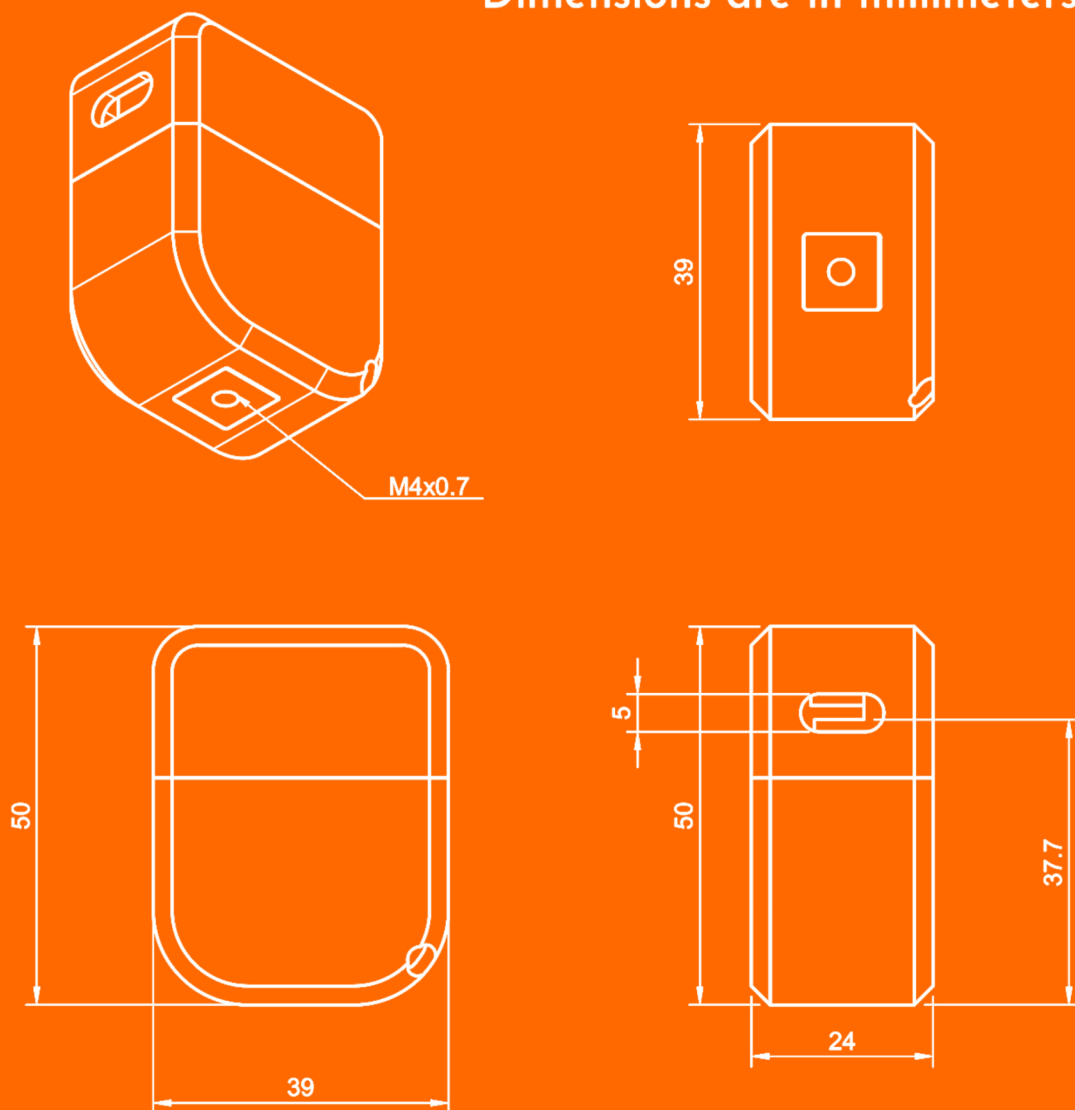
Temperature Crystal Mount with Driver



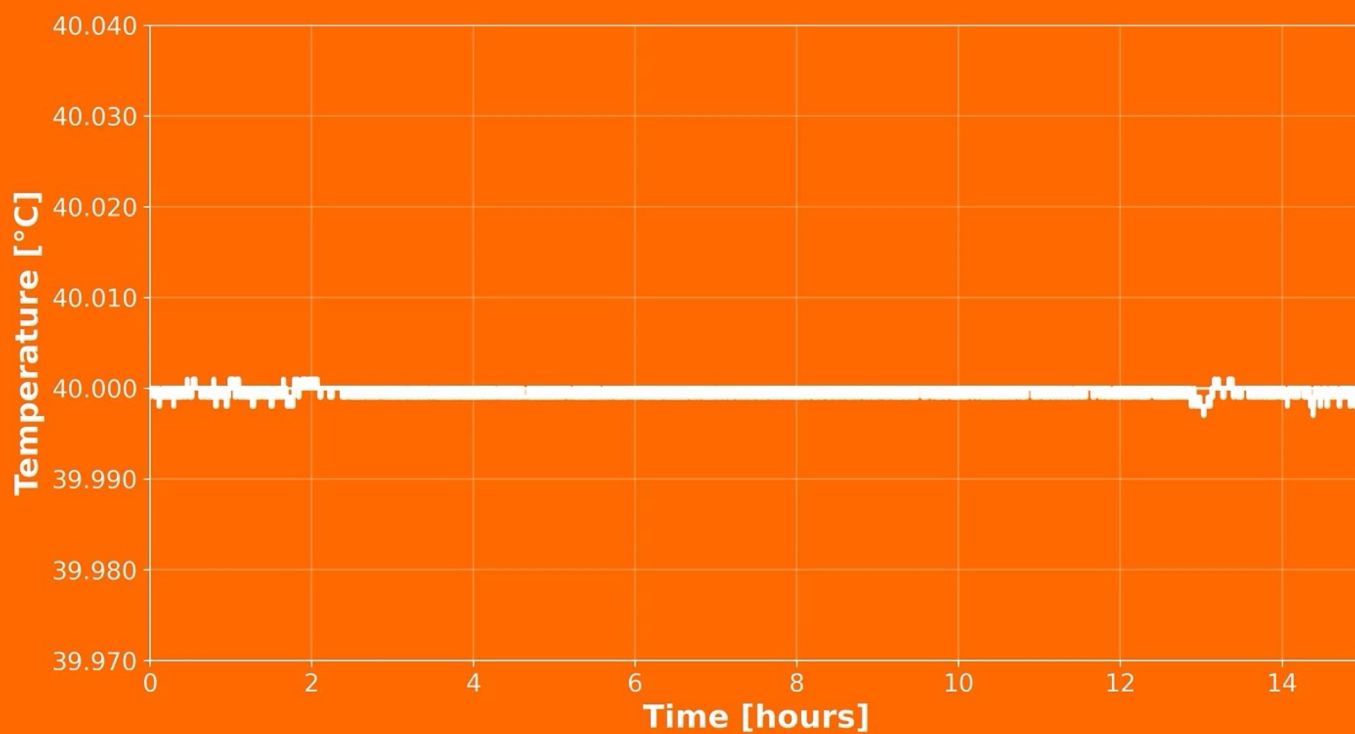


Parameter	Value
Temperature range (Celsius)	20-90
Temperature stability (Celsius)	+ - 0.1
Heating type	Peltier
Temperature sensor	NTC
Driver	SLF TC1
Crystal thickness (mm)	Up to 4
Crystal width (mm)	Up to 8
Crystal length (mm)	Up to 30
Maximum current (A)	1.9
Maximum required Voltage (V)	9.1

Dimensions are in millimeters (mm)



Temperature stability

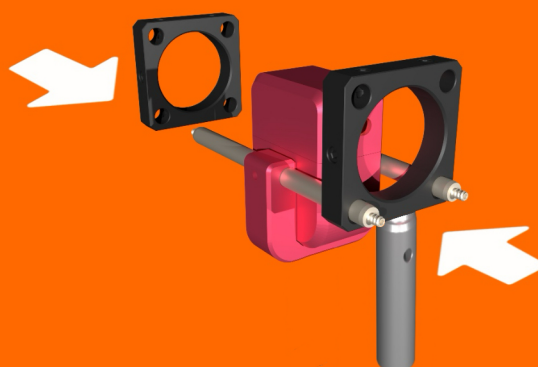
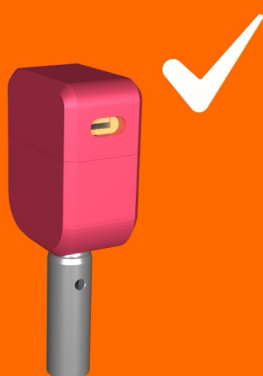


Driver

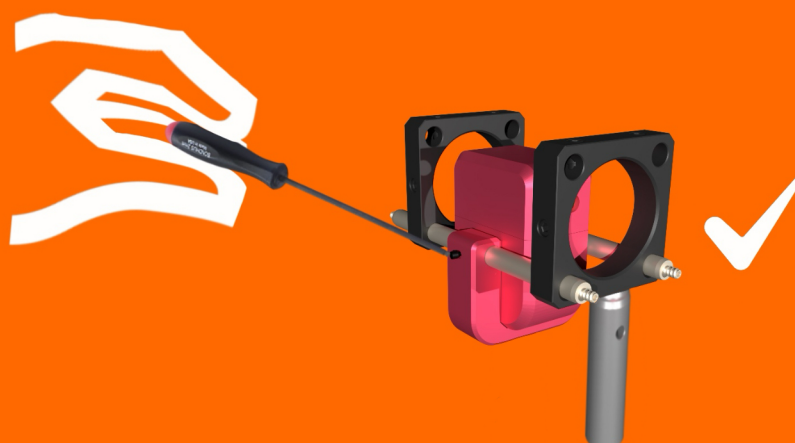


Parameter	Min	Typ	Max	Unit
Input voltage	100		250	VAC
Output power			25	WDC
Output voltage			± 5	VDC
Temperature control range ¹	5		80	°C
Set-point resolution	0.01			°C
Absolut temperature accuracy ²		± 0.1		°C
Temperature stability (24 hour) ³		± 0.01		°C
Heating time from ambient to 70°C ⁵		4		Minutes
Cooling time from ambient to 70°C to 30°C ^{4,5}		4		Minutes
Cooling time from ambient to 60°C to 30°C ^{4,5}		4		Minutes
Operating temperature (external)	10			°C
External Dimensions (LxWxH)		199x158x74		mm

Mount onto the post:



Screw to
lock cage
mount



How to mount crystal:



1. Remove lid

2. Uncrew the screw

3. Remove support bracket

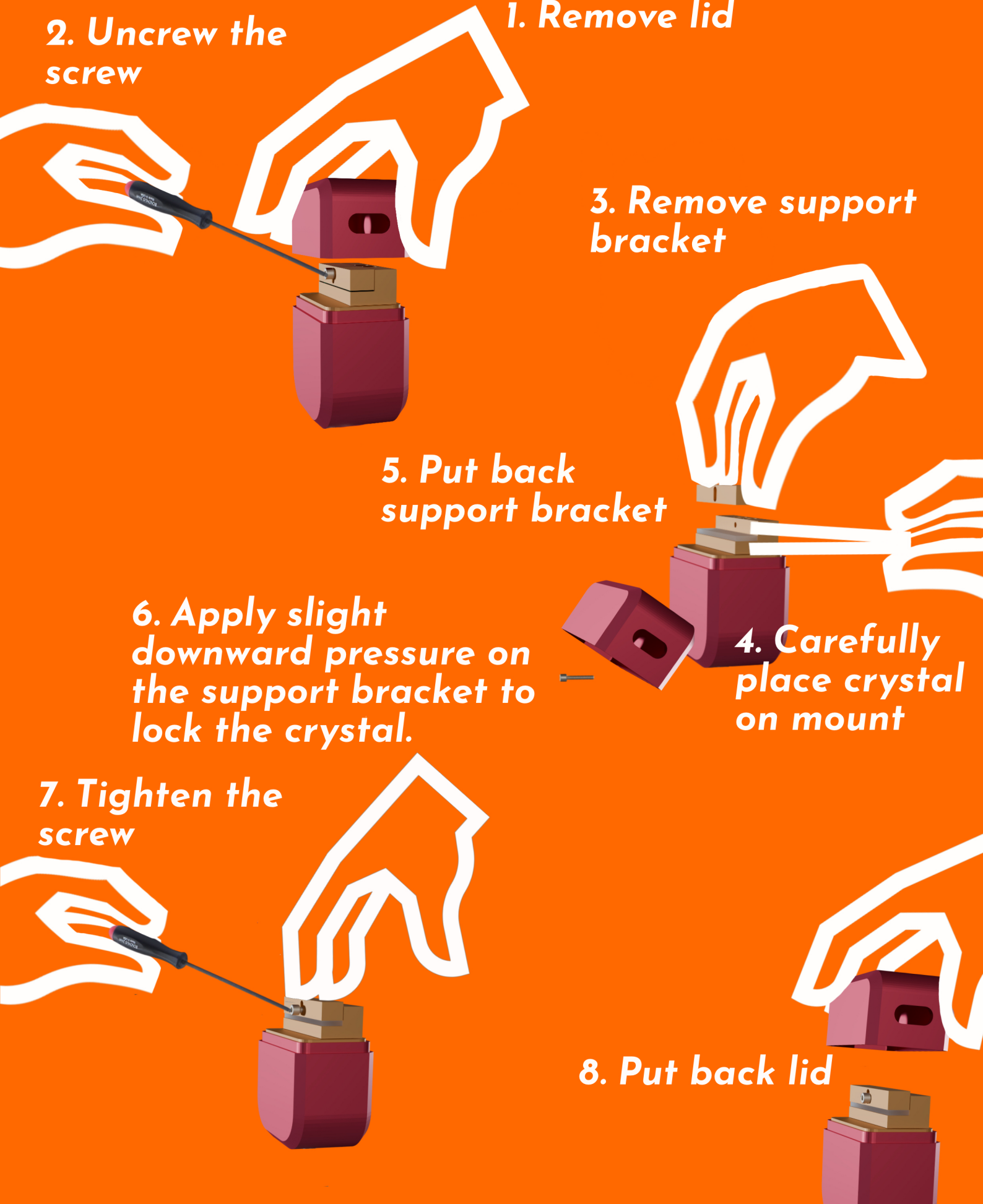
5. Put back support bracket

6. Apply slight downward pressure on the support bracket to lock the crystal.

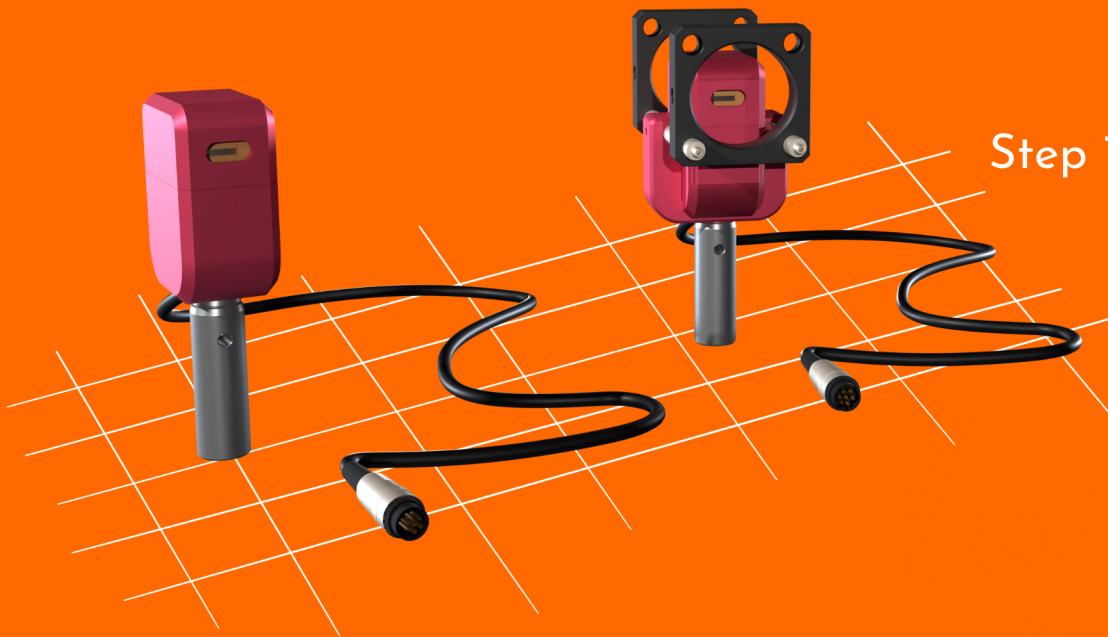
4. Carefully place crystal on mount

7. Tighten the screw

8. Put back lid



How to use it:



Step 1. Choose setup

Step 2. Connect cable to driver



Step 3: Set the temperature using the **Arrow buttons**. Press the up arrow to increase the temperature and the down arrow to decrease it. When you are satisfied with the selected value, click **Enable**. The temperature will then rise steadily, and you can monitor the temperature progress on the screen.